

Meeting the audience

A new year ahead. New challenges.
Exciting meetings. And on show;
new and fantastic designs by some
of the world's leading designers.



CANTI by Björn Dahlström

*"When developing Canti we focused a lot on comfort
without losing the aesthetics or stackability."*

Canti is a chair with an austere and graphic, almost architectural, design.
The angles at the seat and back, together with the upholstery and
flexibility of the frame, create maximum comfort.

ROBO by Luca Nichetto

"I thought the video's concept of robots being constructed and given life was so exciting, and I couldn't stop thinking that it should be possible to do something similar with furniture. My fantasy became reality when I transformed the forms of the human robots into chairs."

Robo is inspired by a 1999 music video by Icelandic artist Björk and Chris Cunningham, in which robots become human and come to life. All the parts fit into a 50x50x20 cm box, which facilitates transport and also meets OFFECCT's stringent environmental demands.

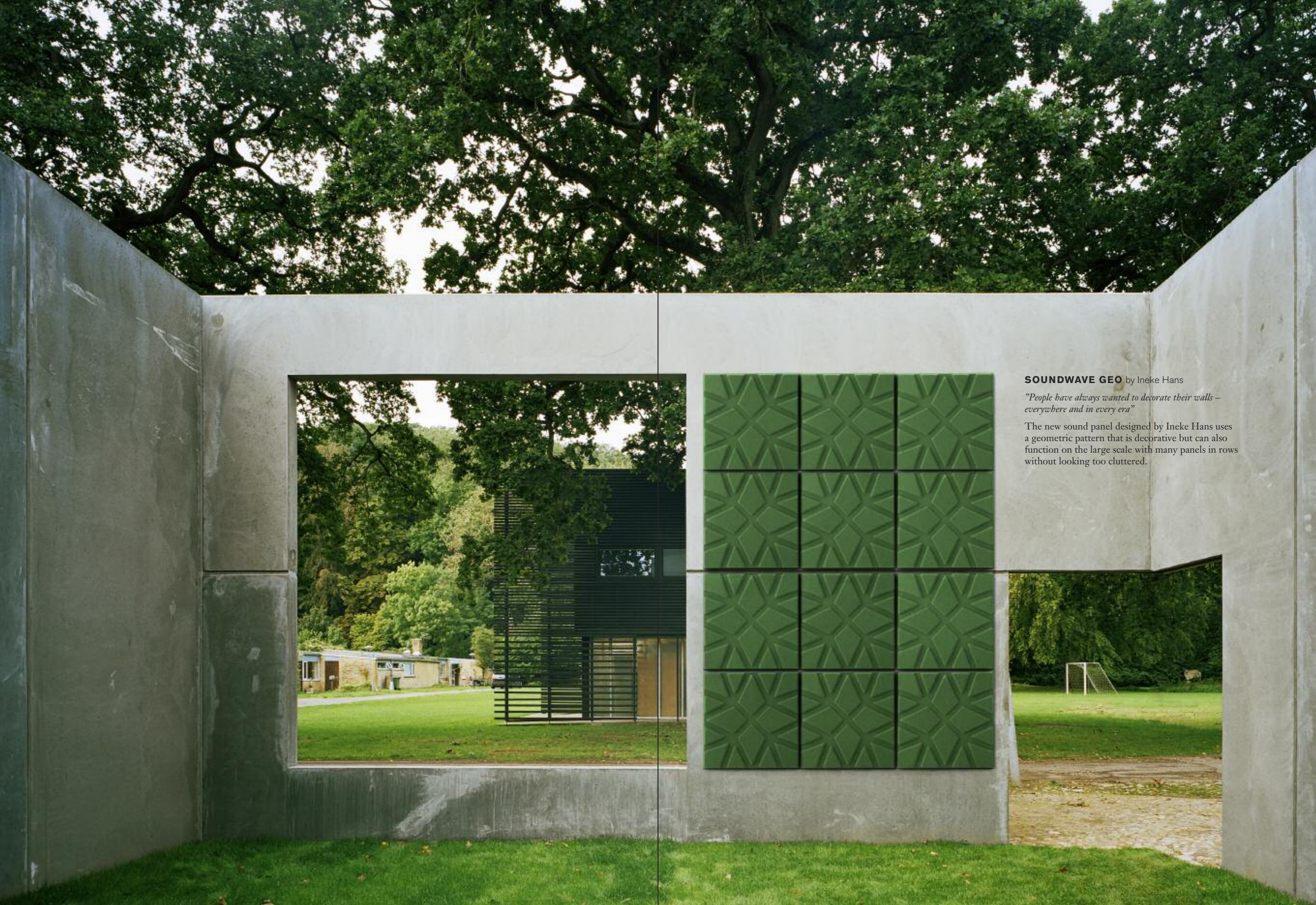


FLY by Patrick Norguet

“It is really not a complicated design. What was difficult was to find a manufacturer who could make the technical textile with the minimum possible environmental impact.”

In Fly the fabric itself creates much of the shape by being stretched over the metal frame. Very little energy is used to make the fabric and meets high demands for sustainable production.





SOUNDWAVE GEO by Ineke Hans

"People have always wanted to decorate their walls – everywhere and in every era"

The new sound panel designed by Ineke Hans uses a geometric pattern that is decorative but can also function on the large scale with many panels in rows without looking too cluttered.

ORIGAMI by Carlos Tiscar

"A person can sit comfortably in this chair for a long time. To me, good design is environmentally sound because such objects and furniture tend to have a longer lifespan."

Tiscar's easy chair and sofa consist of angular sections with straight lines. However, even though the back support is made up of rectangles, the overall impression is soft.



SNOWFLAKES by Claesson Koivisto Rune

"It began when I saw fabulous photos by the nineteenth-century photographer Wilson Bentley at a trade fair. He photographed snow crystals for forty-six years!"

Snowflakes is the world's first furniture to be both mass produced and unique, meaning that every single table has a unique top, made of Corian. The table is produced by using advanced computer software.



MINIMA by Claesson Koivisto Rune

*"This furniture works equally well everywhere.
It can be in a home or office environment. I wish we'd
already designed it when I bought my big Italian sofa!"*

Minima is a new series of soft seating furniture.
The concept was for an elegant furniture series
that could also fit into smaller spaces.



MOD by Monica Förster

*"I wanted to create a timeless chair that lasts a long time.
To me, the form conveys a sense of lightness, energy,
speed and well-being."*

Mod is equally at home in both public and private settings.
The chair is stackable and easy to handle.



DROPLET by Inngun Eikeland Björkelo
*"With a clear and simple character, this design finds
inspiration from the oceanfront setting of Bergen, Norway."*

Droplet is a table inspired by a droplet
hitting a pool of water, depicted in the ripples
in the centre of the table.



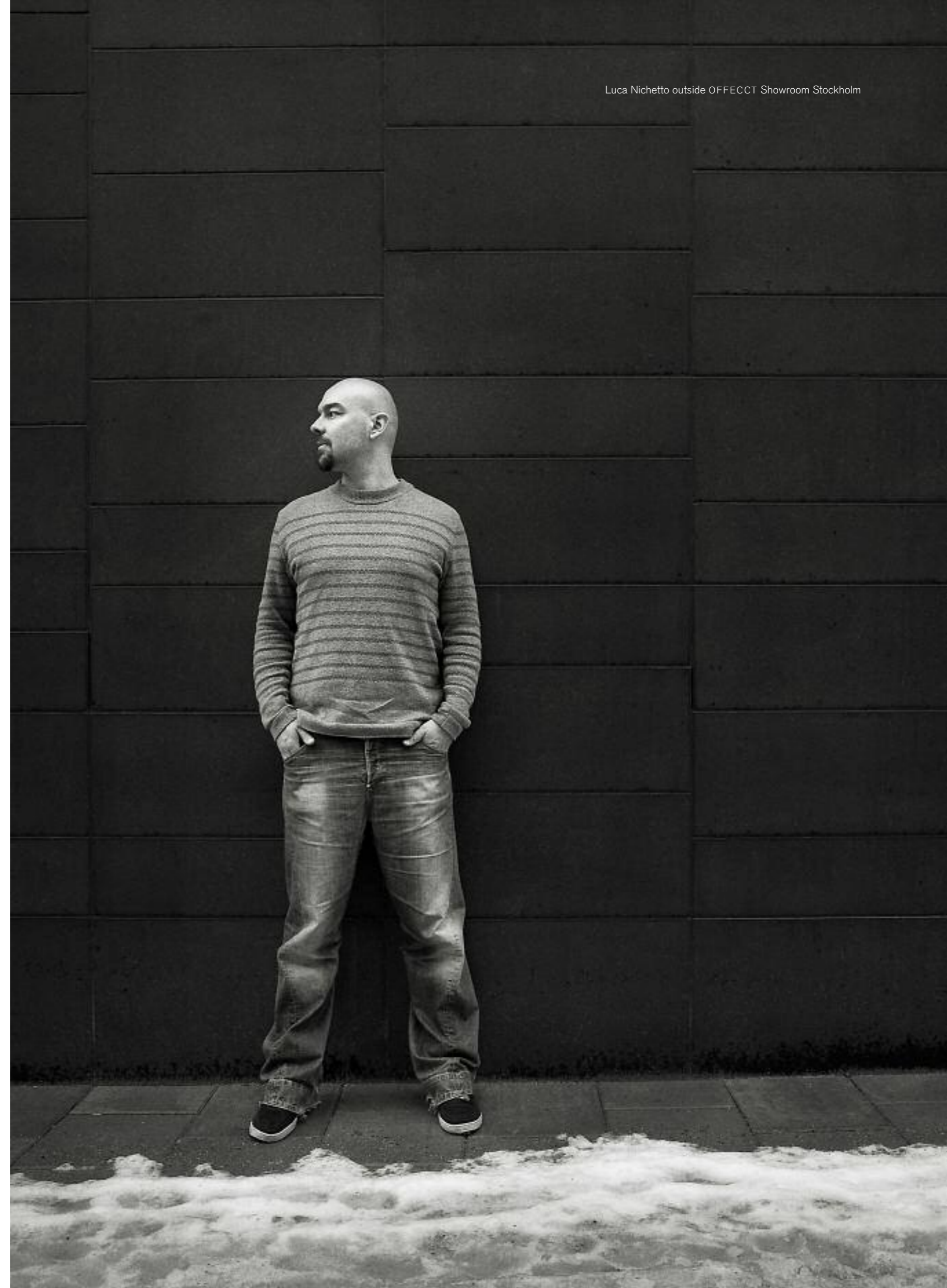
Equally at home with the handmade as the mass-produced, Italian designer Luca Nichetto nevertheless thrives on technical challenges. The Venice-based talent explains the inspirations and motivations behind his latest chair for OFFECCT.

Luca Nichetto

by Max Fraser

Italian design talent, Luca Nichetto, cites Icelandic singer Björk as the inspiration for his new 'Robo' chair for OFFECCT. You may be puzzled by such a reference until you cast your mind back to 1999 when the singer released her hit single and video *All is full of love*. A robotic Björk is featured lying in the centre of a sterile room being assembled or repaired by mechanical arms in what appears to be a clinic for robots. Ten years later, thanks to Nichetto and OFFECCT, she now has a chair to sit on.

Luca Nichetto outside OFFECCT Showroom Stockholm



Indeed, stylistically aligned to Björk's robot, the chair comprises perfectly engineered body parts – that of the seat, back, and four legs – which are mounted together with thin connector rods. By virtue of there being only six structural elements, the chair can be shipped 'flat packed' in a small box and assembled onsite.

Of course, the distinctly irregular shape of most chairs leaves huge amounts of wasted space within the square volume of a regular box. In light of the environmental impact of shipping and ever-increasing freight costs, it is inefficient and even irresponsible to transport air. Consequently, from day one, the motivation for a component-based design came about through a combined desire from both Nichetto and OFFECCT to reduce the environmental impact of their production.

Nichetto recalls his desire to work with the traditional Scandinavian material of choice – plywood – whilst exploiting a new technology for the complicated structure of each body part. The fittings for the connector rods are sandwiched between one sheet of plywood and one sheet of felt – the bulging and curvaceous detail of which is responsible for not only the structural integrity of the design but also much of the inherent character of this chair.

From start to completion, the chair remained at the centre of a healthy "ping-pong" dialogue between Nichetto and the OFFECCT team. At every stage, they were informing and learning from each other and drawing from the other's skills and expertise. Many of the production difficulties were solved in Italy in partnership with several suppliers with whom Nichetto has existing connections.

The Robo chair is Nichetto's first project with OFFECCT. "I met the owners, Anders and Kurt, two years ago at the Stockholm Furniture Fair from which our relationship blossomed," states Nichetto. "I've always been impressed by the quality of their production, the simplicity of their designs, and their strict environmental policy." He implies that the issue of sustainability in his home country of Italy is not yet of primary concern, and certainly not on a level with the usual market drivers – style and quality.



"The motivation for a component-based design came about through a desire to reduce the environmental impact of their production."

For a product that was two years in the making, it is no surprise that it features as the centre of attention in the OFFECCT showroom at its launch during the Stockholm Furniture Fair in 2010. Nichetto eagerly accepted the invitation to create the installation in this city centre location. He is using the opportunity to showcase the new chair alongside some of his smaller designs, such as accessories and tabletop items, as a way of communicating his studio output, design ideas, process, and philosophy to the Scandinavian market.





So what of the man himself? Born and raised on the glassmaking island of Murano neighbouring Venice, Nichetto was aware that he wanted to be a designer from an early age. His grandfather was a glassmaker in the famous Murano workshops so the influence of material manipulation and object creation was presented first-hand for the young boy to observe. He stayed in the city to study, both at the Art Institute and IUAV (University Institute of Architecture of Venice) where he graduated in industrial design. His childhood aspirations were realized at the age of 23 when he designed his first products for leading Murano brand, Salviati. In 1999, he began working for leading Italian lighting manufacturer Foscarini, not only designing but also consulting on new material research and product development. Indeed, such experience reinforced his passion for materials and processes, and provided a strong foundation on which to establish his own studio in 2006.

Today, at the age of 34, Nichetto remains in Venice, a base from which he builds his studio and undertakes a variety of products for mainly Italian producers. Rooted at the very heart of the designer's pioneering attitude and philosophy is his ongoing curiosity to push the boundaries of production capabilities while inviting an open dialogue between clients and collaborators. On this occasion, he stands poised and ready to enter into conversation with the Swedish design community.



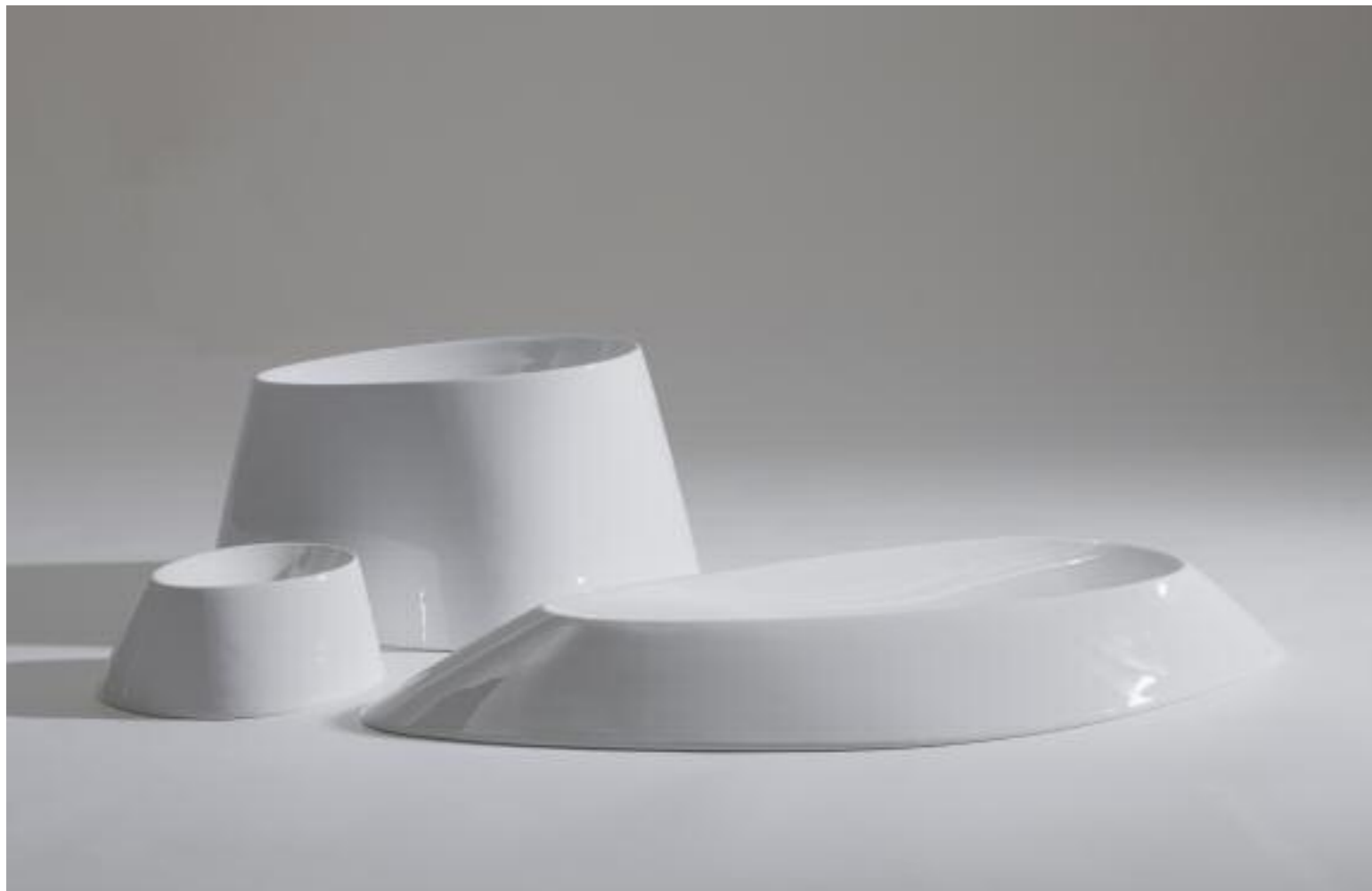
LUCA NICHETTO HAS received many international prizes, such as the Grandesign Award 2008, Good Design Award 2008, the IF Product Design Award 2008 and the Elle Decoration International Design Awards 2009 (EDIDA) as Designer of the Year in the Young Designer Talent section.

Luca Nichetto works for various companies, such as Bonaldo, Bosa, Casamania by Frezza, Emmegi, Foscarini, Fratelli Guzzini, Gallotti & Radice, Italesse, Moroso and Salviati.



TITAN, Carafe, ITALESSE, 2008

LUNAR, Ceramic bowls, BOSA, 2008



FLUTE LINE, Glass, ITALESSE, 2008

EMPIRE, Floor standing lamp, FOSCARINI, 2007



Tools for communication

by Richard Sigray



Meetings are a powerful driving force for organisations. At OFFECCT each product has a communicative aspect. The goal is to produce furniture that results in profitable meetings.

Few myths are as long-lived as that of the solitary creative genius. However, a closer look at major discoveries and ground-breaking innovations will reveal that they are often supported by a group of people. It is in the encounter with others that new ways of thinking are born.

For many years OFFECCT has collaborated with researchers to analyse how architecture and design influence people and how we communicate. The research has demonstrated that employees can spend up to 25 per cent of their

time participating in meetings. For executives the figure can be as high as 80 per cent.

There are many parameters that influence the result of a meeting. Space, air quality, sound, lighting, furniture and technical equipment all play a part in how we experience a meeting. We are affected by all of our senses.

“Built around computers, the traditional workplace is designed for linear and rational thinking. At OFFECCT we want to break this pattern and create furniture for meeting places that provide energy, make people more open-minded and stimulate the exchange of ideas,” says Managing Director, Kurt Tingdal.

According to Kurt Tingdal there is much to be gained by not creating static meeting spaces. Different meetings require different environments if they are to be fruitful. One type of meeting space is perhaps suited for formal meetings but not for short or creative mee-

tings. A common mistake is to make the meeting spaces too large. Eight out of ten meetings include less than four people.

“When we initiate a collaboration with a designer we are very open about how we word the brief. The starting point is what the meeting places of today and the future will look like and which requirements are demanded of the interior design. We never ask a designer to only design a chair,” Kurt Tingdal explains.

Eero Koivisto’s sofa Float High is born out of this spirit. The point of departure for the designer and OFFECCT was how a private space may be created in open-plan offices and open public environments. The high back of the sofa enables a private conversation in an otherwise lively environment. Float High is an excellent example of OFFECCT’s view of design as a tool for communication. In this case the furniture in itself is a meeting place.

OFFECCT News 2010



CANTI
Chair
Björn Dahlström



DROPLET
Table
Ingunn Eikeland Björkelo



FLY
Easy chair
Patrick Norguet



MINIMA
Easy chair
Claesson Koivisto Rune



MOD
Arm chair
Monica Förster



MOD
Chair
Monica Förster



ORIGAMI
Easy chair and footstool
Carlos Tiscar



OYSTER
Footstool
Michael Sodeau



MINIMA
Chaise longue
Claesson Koivisto Rune



MINIMA
Corner sofa and Ottoman
Claesson Koivisto Rune



MINIMA
Sofa
Claesson Koivisto Rune



ROBO
Chair
Luca Nichetto



SNOWFLAKES
Tables
Claesson Koivisto Rune



SOUNDWAVE® GEO
Acoustic panel
Ineke Hans



SPOON
Footstool
Monica Förster

OFFECCT Collection



EASY BLOCK
Jean-Marie Massaud



FLOAT
Eero Koivisto



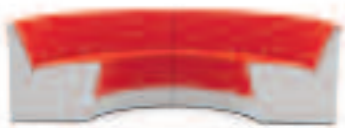
FLOAT HIGH
Eero Koivisto



GHOST
Eero Koivisto



GROW
Teruhiro Yanagihara



KING
Thomas Sandell



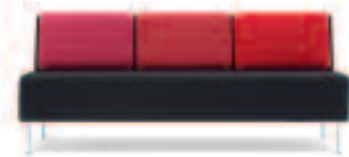
NEMO
Eero Koivisto & Ola Rune



ORBIT
Eero Koivisto



ORGY
Karim Rashid



PLAYBACK
Eero Koivisto



SMALLTOWN
Eero Koivisto



BOND
Jean-Marie Massaud



FLOAT
Eero Koivisto



FLOAT HIGH
Eero Koivisto



GHOST
Eero Koivisto



LOUIS IX LOW
Carlos Tiscar



LOUIS IX LOW
Carlos Tiscar



MONO LIGHT
Ola Rune



NEMO
Eero Koivisto & Ola Rune



ORBIT
Eero Koivisto



OYSTER HIGH
Michael Sodeau



OYSTER
Michael Sodeau



PALMA
Khodi Feiz



QUEEN
Olle Anderson



SMALLTOWN
Eero Koivisto



SOLICHAIR
Alfredo Häberli



SOLITAIRE
Alfredo Häberli



SPOON
Monica Förster



SPOON LOW
Monica Förster



TEMPO
Andrea Ruggiero



TINTO CENTER
Claesson Koivisto Rune



BOND
Jean-Marie Massaud



BOND
Jean-Marie Massaud



BOND
Jean-Marie Massaud



BOND
Jean-Marie Massaud



BOND LIGHT
Jean-Marie Massaud



BOND LIGHT
Jean-Marie Massaud



CORNFLAKE
Claesson Koivisto Rune



CORNFLAKE
Claesson Koivisto Rune



CORNFLAKE
Claesson Koivisto Rune



CORNFLAKE
Claesson Koivisto Rune



KING
Thomas Sandell



LOUIS IX
Carlos Tiscar



LOUIS IX
Carlos Tiscar



MONO LIGHT
Ola Rune



MONO LIGHT
Ola Rune



PALMA MEETING
Khodi Feiz



PALMA MEETING
Khodi Feiz



QOOL
Olle Anderson



QUICK
Olle Anderson



QUICK
Olle Anderson



QUILT
Olle Anderson



TOFFEE
Eero Koivisto



AMAZONAS
Eero Koivisto



BASIC
OFFECCT Design Studio



BIRD
Broberg & Ridderstråle



BOND
Jean-Marie Massaud



BOND
Jean-Marie Massaud



CORNFLAKE
Claesson Koivisto Rune



CORNFLAKE
Claesson Koivisto Rune



CORNFLAKE
Claesson Koivisto Rune



CORNFLAKE
Claesson Koivisto Rune



GRIP
Satyendra Pakhalé



ETAGE
Claesson Koivisto Rune



OUTLINE
Mika Tolvanen



PROPELLER
Eero Koivisto



PROPELLER
Eero Koivisto



TRAY
Monica Förster



VERTIGO
Eero Koivisto



WINDOW
Eero Koivisto



FLOWER
Eero Koivisto



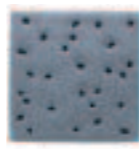
FLOWER MEDI
Eero Koivisto



MINI FLOWER
Eero Koivisto



SOUNDWAVE® Flo
Karim Rashid



SOUNDWAVE® Luna
Teppo Asikainen



K-LINE
Khodi Feiz



K-LINE
Khodi Feiz



K-LINE
Khodi Feiz



SOUNDWAVE® Scrunch
Teppo Asikainen



SOUNDWAVE® Skyline
Marre Moerel



K-LINE
Khodi Feiz



K-LINE
Khodi Feiz



K-LINE
Khodi Feiz



SOUNDWAVE® Swell
Teppo Asikainen



SOUNDWAVE® Village
Claesson Koivisto Rune



SPARKS
Mikko Laakkonen



SPARKS
Mikko Laakkonen



CLOUD
Monica Förster



FOREST
Katrin Greiling



SPINNAKER
Beat Karrer



PICK UP
Alfredo Häberli



BOND XL
Jean-Marie Massaud

OFFECCT Designers

Alfredo Häberli
www.alfredo-haerberli.com

Andrea Ruggiero
www.andrearuggiero.com

Beat Karrer
www.beatkarrer.com

Björn Dahlström
www.dahlstromdesign.se

Broberg & Ridderstråle
www.brda.se

Carlos Tiscar
www.carlostiscar.com

Claesson Koivisto Rune
www.claessonkoivistorune.se

Ineke Hans
www.inekehans.com

Inngun Eikeland Bjørkelo

Jean-Marie Massaud
www.massaud.com

Karim Rashid
www.karimrashid.com

Katrin Greiling
www.katringreiling.com

Khodi Feiz
www.feizdesign.com

Luca Nichetto
www.lucanichetto.com

Marre Moerel
www.marremoerel.com

Michael Sodeau
www.michaelsodeau.com

Mika Tolvanen
www.mikatolvanen.com

Mikko Laakkonen
www.mikkolaakkonen.com

Monica Förster
www.monicaforster.se

Olle Anderson
www.olleanderson.se

Patrick Norguet
www.patricknorguet.com

Satyendra Pakhalé
www.satyendra-pakhale.com

Teppo Asikainen
www.valvomo.com

Teruhiro Yanagihara
www.isolationunit.info

Thomas Sandell
www.sandellsandberg.se

Also meet us at

Salone Internazionale del Mobile
Milan, Italy
14–19 April 2010

Orgatec
Cologne, Germany
26–30 October 2010

Stockholm Furniture Fair
Stockholm, Sweden
8–12 February 2011

OFFECCT

OFFECCT News, Part One 2010

Publisher:
OFFECCT AB

Creative team:
Markus Moström Design, Wolfgang Design

Contributing writers:
Hildur Blad, Max Fraser, Richard Sigray and Karin Sköldberg

Photography

Åke E:son Lindman, page 6–12 and 14–17
Cevdet Gökhan Palas, page 2
Massimo Gardone, Page 24–25
Markus Moström, page 3, 13, 19, 26
Foto Tiziano, page 24 (Lunar)
King Wu, page 5
All furniture photography by Peter Råberg,
page 3, 5, 6–17, 20–23, 26–30

www.offecct.se

Find out more about upcoming events, new products and our designers at our website. During the Stockholm Furniture Fair you can also follow our activities on a daily basis.

Copyright © OFFECCT 2010